

TALAS

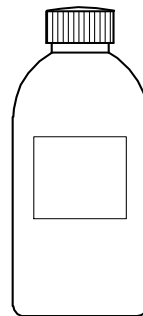
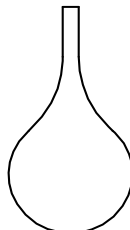
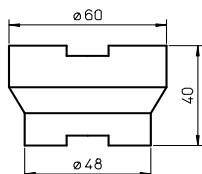
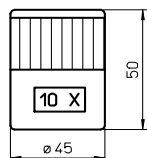
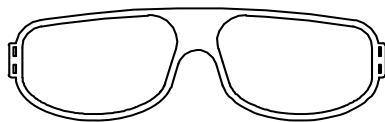


CO₂ laser consumables – LVD®

TALAS

Paardenkerkhofstraat 56 B-2800 Mechelen
Tel. 015.61.60.07 Fax. 015.61.75.27 Email. info@talas.be

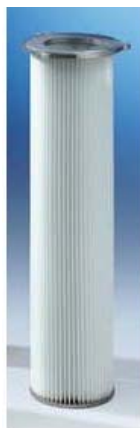
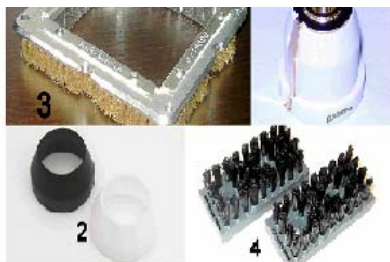
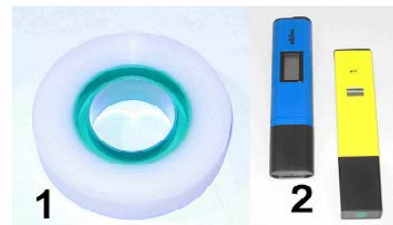
ACCESSORIES

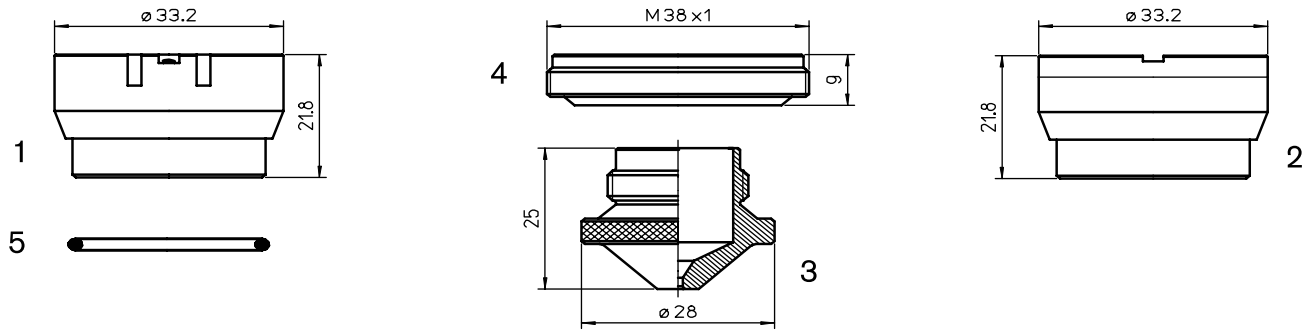


POS	Talas CODE	ORIGINAL CODE	DESCRIPTION
AL1100			LASER CO ² GLASSES CE APPROVED
AL1100017			LASER ECO CO ² GLASSES CE APPROVED 1.5-4.0kW
AL1100015			LASER PROTECTOR CO ² GLASSES CE APPROVED 1.5-4.0kW
AL1100018			LASER PROTECTOR CO ² GLASSES CE APPROVED 1.5-4.0kW
GLADIATOR			LASER OVERGLASSES CO ² LIGHT VERSION 80g
OVERSPEC			LASER OVERGLASSES CO ² VERSION 1500-4000W
AL1001	123602		LENS CLEANING LIQUID - ml 200
AL1001/L	123602		LENS CLEANING LIQUID - ml 1000
AL1003-100	240568-100		LENS CLEANING POLISH - ml 100
AL1003-200	240568-200		LENS CLEANING POLISH - ml 200
AL1004			POLISH DETERGENT
AL1010			DROPPER FOR LENS CLEANING LIQUID
AL1120			LATEX GLOVES - 10 pieces
ALI115			INDIUM WIRE Ø 1.0mm FOR 1.5" LENS
ALI115/M			MAZAK® INDIUM 0.8mm FOR 1.5" MAZAK® LENS
ALI120			INDIUM WIRE Ø 1.0mm FOR Ø 2.0mm LENS
ALI120/M			MAZAK® INDIUM 0,8mm FOR 2,0" LENS
SC50			LENS CLEANING PAPER - 75x135 - 50sheets
SC100			KODAK LENS CLEANING PAPER - 70x120 - 50sheets
SC105			LENS CLEANING PAPER - 100x105 - 50sheets
SC20			COTTON SWAB -20 pieces
AL1115			LENS CLEANING PRE-CUT COTTON - 100 pieces
AL255	091860		SCALE LUPE
AL271			BASE FOR LENS MAINTENANCE FOR 1,5" & 2,0" LENS
AL282			INJECTOR
350424-005			Lens Cleaning Holder 1.5" with Polarisors
350423-005			Lens Cleaning Holder 2.0" with Polarisors
910000			Lens Cleaning Kit
020003-101			EZ Clean Wipes for Easy Lens Cleaning/ 24Pack

TALAS

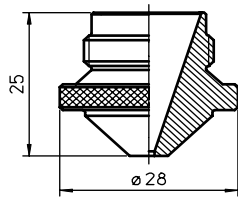
Paardenkerkhofstraat 56 B-2800 Mechelen
Tel. +32(0)15.61.60.07 Fax. +32(0)15.61.75.27
Email. info@talas.be



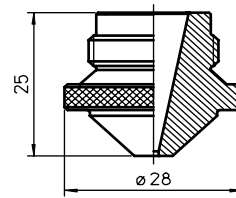


Consumables

	Centricut part number	Reference number	Alternate reference	Description	Pkg qty
1	PT311-1146	281146, P0380-211-00001, 29100033	AL130/S	Nozzle holder ITM 1.5" DZ (aluminum)	1
	PT311-1146 OEM	281146, P0380-211-00001, 29100033	AL130	Nozzle holder ITM 1.5" DZ (OEM) (aluminum)	1
2	PT311-0565	280565, P0497-605-00001, 29100106	AL40	Nozzle holder, KTM 1.5" DXN (ceramic)	1
	LV332-1993	D5241993	L757	Nozzle – 0.8 mm (cylindrical)	1
	LV332-5470	D7945470	L141	Nozzle – 1.0 mm (cylindrical)	1
	LV332-0001	D5241982	L758	Nozzle – 1.2 mm (cylindrical)	1
	LV332-5434	D7945434	L142	Nozzle – 1.5 mm (cylindrical)	1
	LV332-5452	D7945452	L143	Nozzle – 2.0 mm (cylindrical)	1
	LV332-5517	D7945517	L144	Nozzle – 2.5 mm (cylindrical)	1
3	LV332-0002		L145	Nozzle – 3.0 mm (cylindrical)	1
	LV332-1993CP	D5241993	L757X	Nozzle – 0.8 mm CP (cylindrical)	1
	LV332-5470CP	D7945470	L141X	Nozzle – 1.0 mm CP (cylindrical)	1
	LV332-0001CP	D5241982	L758X	Nozzle – 1.2 mm CP (cylindrical)	1
	LV332-5434CP	D7945434	L142X	Nozzle – 1.5 mm CP (cylindrical)	1
	LV332-5452CP	D7945452	L143X	Nozzle – 2.0 mm CP (cylindrical)	1
	LV332-5517CP	D7945517	L144X	Nozzle – 2.5 mm CP (cylindrical)	1
	LV332-0002CP		L145X	Nozzle – 3.0 mm CP (cylindrical)	1
4	PT347-4297	P0492-702-00001, 29100021	AL198	Insulating ring (plastic)	1
	PT311-0001	P0492-702-00002	AL201	Insulating ring (plastic)	1
5	AM326-6453	71366453	AL94	O-ring for outer nozzle	1



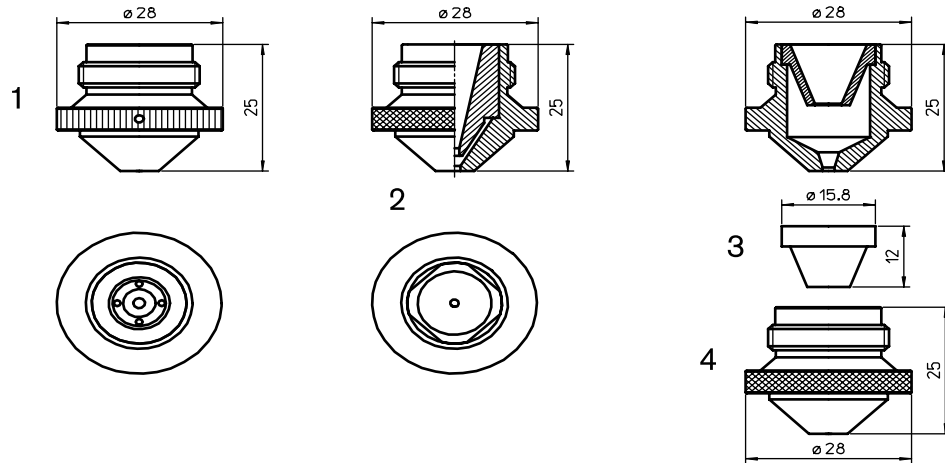
1



2

Consumables

Centricut part number	Reference number	Alternate reference	Description	Pkg qty
LV332-1863	D5241863	L151	Nozzle – 1.0 mm HD (conical)	1
LV332-1982		L759	Nozzle – 1.2 mm HD (conical)	1
LV332-1862	D5241862	L152	Nozzle – 1.5 mm HD (conical)	1
LV332-2512	D5242512	L748	Nozzle – 1.7 mm HD (conical)	1
LV332-1855	D5241855	L146	Nozzle – 2.0 mm HD (conical)	1
LV332-2513	D5242513, Z000000539D	L749	Nozzle – 2.3 mm HD (conical)	1
LV332-1856	D5241856, Z000000563B	L147	Nozzle – 2.5 mm HD (conical)	1
LV332-1857	D5241857, Z000000540B	L148	Nozzle – 3.0 mm HD (conical)	1
LV332-1877	D5241877, Z000000564B	L149	Nozzle – 3.5 mm HD (conical)	1
LV332-1878	D5241878, Z000000565B	L283	Nozzle – 4.0 mm HD (conical)	1
LV332-2531	D5242531, Z000000566B	L1303	Nozzle – 4.5 mm HD (conical)	1
1 LV332-2535	D5242535, Z000000567B	L1304	Nozzle – 5.0 mm HD (conical)	1
LV332-2536	D5242536, Z000000568B	L1305	Nozzle – 6.0 mm HD (conical)	1
LV332-1863CP	D5241863	L151X	Nozzle – 1.0 mm HD CP (conical)	1
LV332-1982CP		L759X	Nozzle – 1.2 mm HD CP (conical)	1
LV332-1862CP	D5241862	L152X	Nozzle – 1.5 mm HD CP (conical)	1
LV332-2512CP	D5242512	L748X	Nozzle – 1.7 mm HD CP (conical)	1
LV332-1855CP	D5241855	L146X	Nozzle – 2.0 mm HD CP (conical)	1
LV332-2513CP	D5242513	L749X	Nozzle – 2.3 mm HD CP (conical)	1
LV332-1856CP	D5241856	L147X	Nozzle – 2.5 mm HD CP (conical)	1
LV332-1857CP	D5241857	L148X	Nozzle – 3.0 mm HD CP (conical)	1
LV332-1877CP	D5241877	L149X	Nozzle – 3.5 mm HD CP (conical)	1
LV332-1878CP	D5241878	L283X	Nozzle – 4.0 mm HD CP (conical)	1
LV332-2453	D5242453A	L152-S	Nozzle – 1.5 mm HD	1
LV332-2454	D5242454A	L146-S	Nozzle – 2.0 mm HD	1
2 LV332-2416	D5242416A	L147-S	Nozzle – 2.5 mm HD	1
LV332-2455	D5242455 A	L148-S	Nozzle – 3.0 mm HD	1

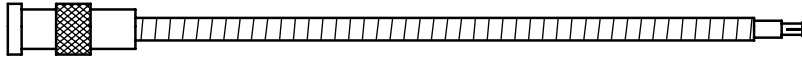


Consumables

	Centricut part number	Reference number	Alternate reference	Description	Pkg qty
1	LV332-0013	G8040180	L1290	Nozzle – 2.5 mm double w/spring 1.3 mm inner	1
	LV332-0180	G8040135	L1291	Nozzle – 2.5 mm double w/spring 1.5 mm inner	1
	LV332-3013	G8040182	L1293	Nozzle – 3.0 mm double w/spring 1.3 mm inner	1
	LV332-3015		L1294	Nozzle – 3.0 mm double w/spring 1.5 mm inner	1
	LV332-0132	G8040132	L1292	Nozzle – 3.0 mm double w/spring 2.0 mm inner	1
	LV332-0013CP	G8040180	L1290X	Nozzle – 2.5 mm double w/spring 1.3 mm inner CP	1
	LV332-0180CP	G8040135	L1291X	Nozzle – 2.5 mm double w/spring 1.5 mm inner CP	1
	LV332-3013CP	G8040182	L1293X	Nozzle – 3.0 mm double w/spring 1.3 mm inner CP	1
	LV332-3015CP		L1294X	Nozzle – 3.0 mm double w/spring 1.5 mm inner CP	1
	LV332-0132CP	G8040132	L1292X	Nozzle – 3.0 mm double w/spring 2.0 mm inner CP	1
2	LV417-0001	Centricut design	L783	Nozzle – 1.0 mm double	1
	LV417-0002	Centricut design	L782	Nozzle – 1.2 mm double	1
	LV417-0003	Centricut design	L784	Nozzle – 1.5 mm double	1
	LV417-0004	Centricut design	L785	Nozzle – 2.0 mm double	1
	LV410-0180	Centricut design	L786	Nozzle – 2.5 mm double	1
	LV417-0006	Centricut design	L787	Nozzle – 3.0 mm double	1
	LV417-0007	Centricut design	L788	Nozzle – 3.5 mm double	1
	LV417-0008	Centricut design	L789	Nozzle – 4.0 mm double	1
	LV417-0001CP	Centricut design	L783X	Nozzle – 1.0 mm double CP	1
	LV417-0002CP	Centricut design	L782X	Nozzle – 1.2 mm double CP	1
	LV417-0003CP	Centricut design	L784X	Nozzle – 1.5 mm double CP	1
	LV417-0004CP	Centricut design	L785X	Nozzle – 2.0 mm double CP	1
	LV417-0005CP	Centricut design	L786X	Nozzle – 2.5 mm double CP	1
	LV417-0006CP	Centricut design	L787X	Nozzle – 3.0 mm double CP	1
	LV417-0007CP	Centricut design	L788X	Nozzle – 3.5 mm double CP	1
	LV417-0008CP	Centricut design	L789X	Nozzle – 4.0 mm double CP	1
3	LV332-0130	Z000000223A	L791	Nozzle – 3.0 mm double	1
	LV332-0131	G8040131	L790	Nozzle – 3.0 mm double	1
	LV418-0001	Centricut design	L157	Nozzle, inner	1
	LV418-0010	Centricut design	L158	Nozzle – 1.0 mm (for inner nozzle)	1
	LV418-0003	Centricut design	L934	Nozzle – 1.2 mm (for inner nozzle)	1
	LV418-0004	Centricut design	L159	Nozzle – 1.5 mm (for inner nozzle)	1
	LV418-0005	Centricut design	L160	Nozzle – 2.0 mm (for inner nozzle)	1
	LV418-0006	Centricut design	L161	Nozzle – 2.5 mm (for inner nozzle)	1
	LV418-0007	Centricut design	L178	Nozzle – 3.0 mm (for inner nozzle)	1
	LV418-0008	Centricut design	L179	Nozzle – 3.5 mm (for inner nozzle)	1

New items shown in bold

1



Consumables

Centricut part number	Reference number	Alternate reference	Description	Pkg qty
1 PT347-0101	P0360-100-00500, 46713300100	AL204	Sensor cable 500 mm KE (OEM)	1
PT347-0450	P0497-002-00450	AL202	Sensor cable 450 mm (OEM)	1

Optics

Centricut part number	Reference number	Type	Diameter	Focal length	Edge thickness
Lenses					
LV333-0023	29100023	MEN	1.5"	5.0"	.290"
LV333-0176	480176	MEN	1.75"	5.0"	.354"
LV333-6326	206326	MEN	2.0"	5.0"	.354"
LV333-1004	458138	MEN	2.0"	5.0"	.380"
LV333-1005	291005-5	MEN	2.0"	7.5"	.380"
LV333-1551	981551	MEN	2.0"	10.0"	.380"

Ultra low absorption lenses

LV333-0023 ULA	29100023	MEN	1.5"	5.0"	.290"
LV333-1005 ULA	291005-5	MEN	1.5"	7.5"	.380"

Centricut part number	Reference number	Material	Diameter	Edge thickness	S1/Reflectivity	S2
Output couplers						
LV333-7295	897295	ZNSE	1.5"	.315"	30MCC-50%	
Rear mirrors						
LV333-6659	966659	GE	1.5"	.315"	30MCC-99.5%	

Optics care

Centricut part number	Reference number	Description	Pkg qty
TR300-6452	N/A	CO ₂ Lens paper (50 sheets)	1
TR300-SC20		Cotton swab – 20 piece	1
TR300-1115		Lens cleaning pre-cut cotton –100 piece	1
TR300-1010	AL1010	Dropper, lens cleaning fluid	1
TR300-255	AL255	Loupe, magnifying	1
TR300-271	AL271	Base, lens maintenance	1
TR300-7388	787388	Mirror polish (250 ml)	1

New items shown in bold

Ophir & Centricut by Talas = 100% Kwaliteitsgarantie & 100% OEM compatibiliteitsgarantie.

Talas is exclusief verdeler van o.a. lenzen & spiegels van **Ophir** voor BeLux en nozzles & ceramieken van **Centricut/Hypertherm** waardoor wij zeer competitieve tarieven hebben. Deze fabrikanten zijn tevens ook leverancier van de grootste fabrikanten(OEM) van lasersnijmachines.

Ophir, een CO² Optica groep en tweede grootste leverancier in de wereld is producent van het volledige gamma optieken voor de OEM en de vervangingsmarkt.

Ophir fabriceert lenzen met verschillende coatings voor een lagere absorptie en voor een langere levensduur:

-**Duralens**: max. absorptie $\leq 0,2\%$; standaard gele lens.

-**Black Magic**: max. absorptie $< 0,15\%$; niet transparante, niet-radioactieve harde coating voor een stabielere focuspunt en hogere warmte geleiding, vochtbestendige coating.

-**Clear Magic**: max. absorptie $< 0,13\%$; transparante, harde coating voor de beste focus stabiliteit en hoogste warmtebestendigheid, PMS-compatibel, vochtbestendige coating.

Centricut/Hypertherm nozzles in een kopertellurium legering, vervaardigd op CNC met diamanten werktuigen, gegarandeerd braamloze bewerking, optimale warmteweerstand, constante geleiding, verspanende tolerantie en concentriciteit $< 0,01\text{mm}$, zeer fijn afgewerkt binnenoppervlak voor een goede doorstroming van het gas en buitenafwerking tegen de hechting van de gesmolten materie, verchroomde nozzles vermijden hechting van de gesmolten materie, dubbele nozzles voor een betere kwaliteit en hogere snij snelheid voor staal vanaf 8mm, lasermarkering van de diameter.

Ophir & Centricut by Talas = garantie à 100% de qualité et 100% de garantie compatibilité OEM

Talas est le distributeur exclusif de e.a. les lentilles et les miroirs de **Ophir** pour le BeLux et des buses & des céramiques de **Centricut/Hypertherm**. De ce fait nous avons des tarifs très compétitifs. Ces fabricants sont aussi fournisseurs des plus grands fabricants (OEM) des machines de découpe au laser.

Ophir, un groupe d'optique CO² et deuxième fournisseur en importance dans le monde, produit la gamme complète d'optiques pour l'OEM et le marché de pièces de rechange. Ophir fabrique des lentilles avec des revêtements différents pour un taux d'absorption inférieur et une durée de vie plus longue:

-**Duralens**: absorption maximale $\leq 0,2\%$, lentille standard jaune

-**Black Magic**: absorption maximale $< 0,15\%$, non transparent, revêtement dur non radioactifs pour un point focal plus stable et une conductivité thermique plus élevée, revêtement résistant à l'humidité

-**Clear Magic**: absorption maximale $< 0,13\%$, revêtement dur transparent pour la meilleure stabilité du point focal et la meilleure résistance à la chaleur, le revêtement PMS-conforme et résistant à l'humidité

Centricut/Hypertherm: buses dans un alliage cuivre-tellurium usinés avec outils diamant sur tours à CN, usage garanti sans bavures, excellente résistance thermique, conductivité constante, tolérances d'usinage et de concentricité $< 0,01\text{ mm}$, la surface intérieure finement travaillée pour une bonne fluidité du gaz et une finition extérieure lisse contre l'accrochage de la matière en fusion, buses chromées évitant l'accrochage de la matière en fusion, double buses pour une meilleure qualité et plus grande vitesse de coupe de l'acier de 8 mm, marquage au laser du diamètre.

Type of nozzle & Reasons for selecting

Adapter This means that it is possible to use a different type of nozzle as long as the nozzle adaptor is purchased. It adapts from a big nozzle to a smaller nozzle and this can save the end-user money in the long run.

CP (chrome plated) CP nozzles are plated with chrome for increased durability. Chrome plated nozzles are much easier to clean and can withstand contact with material better than non-plated nozzles.

Conical This refers to the internal geometry of the nozzle. Due to the internal geometry the gas swirls and spirals down towards the material causing a coaxial flow, this flow prevents plugging of the orifice.

Cylindrical This refers to the internal geometry of the nozzle. Mainly used for gauge steel to 6,4 mm low pressure oxygen cutting.

Double Just as it sounds, this is a nozzle within a nozzle. Sometimes referred to as a "jacketed nozzle". Double nozzles are better for cutting thicker materials. "Better" refers to cut quality more than speed. Double nozzles have a high aspect ratio at the exit helping protect lens from back spatter.

Double with holes or double nozzle insert Used with the outer nozzle; the double nozzle insert inserts into the outer nozzle to form a double.

Double hard This is a double nozzle with the hard chrome plating (this type of chrome plating is only available in North America).

Hard Hard chrome plating (only available in North America), is harder than standard chrome therefore it is more durable.

Hex Hex refers to the machined edge of the nozzle, with the hex machined in it makes it possible to get an open end wrench on the nozzle for tightening and loosening.

High pressure (HP) High density (HD) Used in applications where the gas pressures are really high, used on thicker material and stainless steel and aluminium.

Low pressure Used for low pressure oxygen cutting applications such as gauge material up to 3,2 mm.

Nozzle holder The nozzle holder sometimes also known as the ceramic is the mating partner for the nozzle; the two are combined by threading the nozzle into the holder.

Nozzle, long Refers to the length of the nozzle.

Nozzle, short Refers to the length of the nozzle.

Nozzle, w/step This refers to the internal geometry of the nozzle. Mainly used in higher pressure cutting.

Outer nozzle See double nozzle. This is the mating partner of the double nozzle insert, the two combined make a double nozzle.

Shower Used to cut thick mild steel ($> 6,4\text{ mm}$) w/O₂ assist gas. Shower nozzles have a center nozzle orifice, surrounded by several other holes. This design ensures more effective assist gas volume, without significantly increasing real volume.

Straight taper This refers to the internal geometry of the nozzle, mainly used in higher pressure cutting.

WACS Water-assist cutting system.



TALAS

Paardenkerkhofstraat 56 B-2800 Mechelen
Tel. +32(0)15.61.60.07 Fax. +32(0)15.61.75.27
Email. info@talas.be